



CONTRACT MANUFACTURING  
PRIVATE LABEL FOR EXPORTS & DOMESTICS

We help you achieve it

EFFERVESCENT TABLETS  
TABLETS  
CAPSULES  
ORAL LIQUID  
POWDER

Your trusted and Reliable Partner for,  
Nutraceuticals | Health Supplements | Dietary Supplements



# For, Relief & Management of Menopausal Symptoms

The 4<sup>th</sup> generation folate  
**Quatrefolic**<sup>®</sup>  
"Quatrefolic" is a Registered Trademark of Gnosis S.p.A."





# sleep<sup>zz</sup>

Aid Natural, Healthy & Restful Sleep



IMPROVES  
CONCENTRATION



INCREASES  
PRODUCTIVITY



STRENGTHENS  
IMMUNITY



AVOID WEIGHT  
GAIN



LOWERS  
ANXIETY



PREVENTS  
HYPERTENSION

**10MG** Melatonin Tablets  
Vanilla Flavour





# Natural Eggshell Membrane Capsules for Bone Joints



**Bone Support**



**Muscle Support**



**Joint Support**

- for strong muscles
- for strong & healthy bones
- for strong immune system



# L-Carnitine

## 1000mg

Powered By:



Fat Metabolism & Weight Management



Boosts Cellular Energy



Improves Athletic Performance



PERFORMANCE



MUSCLE RECOVERY



BOOST ENERGY



FAT LOSS



ENDURANCE



METABOLISM



# Cranberry Extract, D-Mannose & Potassium Citrate Sachet





for men's hair growth





# YOUR BRAND

supplement for women's hair growth







# For, Weight Loss

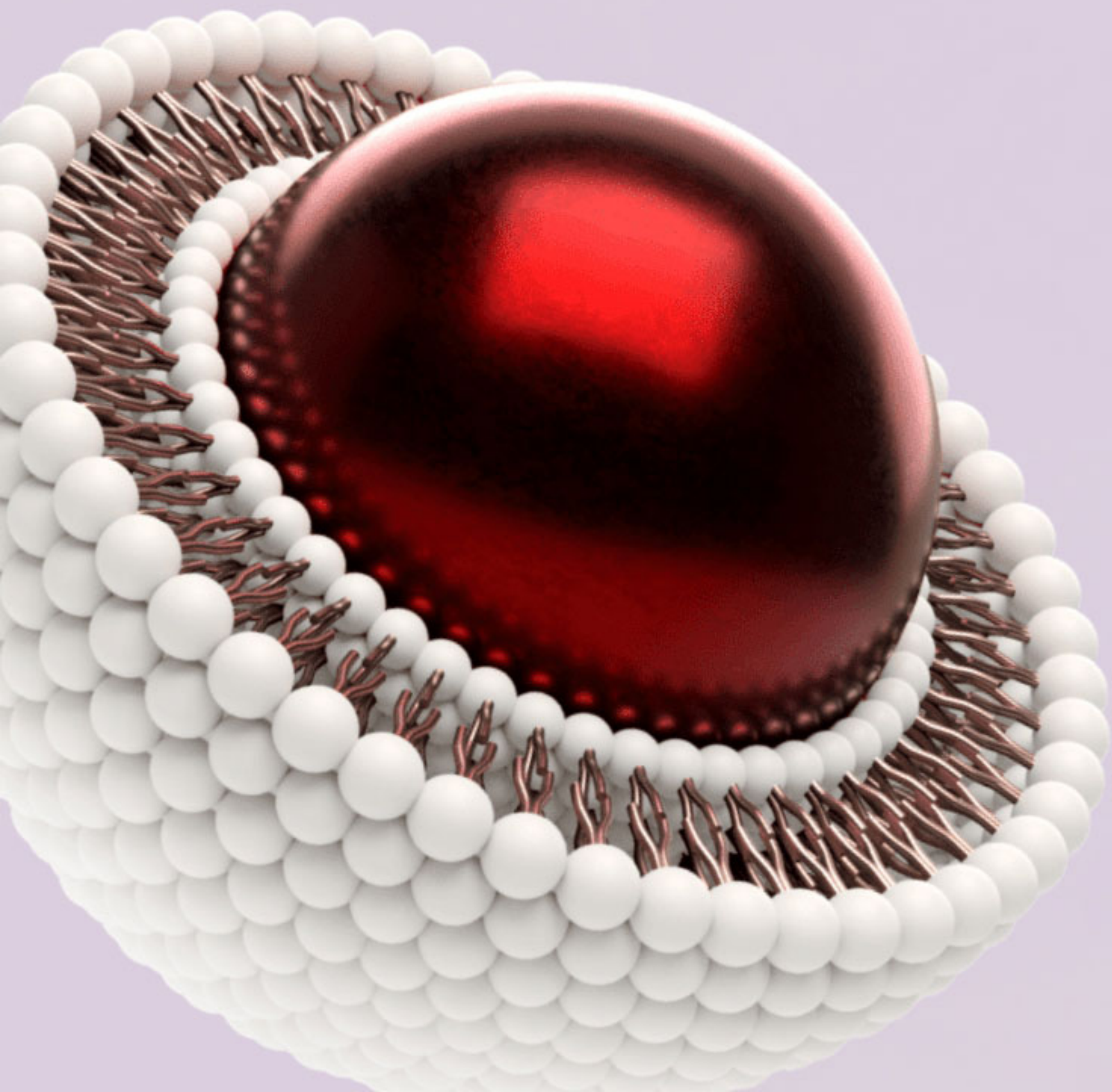
Garcinia Cambogia, Green Coffee bean Extract,  
Green Tea Extract, Boswellia Serrata, Triphala  
Apple Cider Vinegar & L-Carnitine





# YOUR BRAND

Ferric Pyrophosphate (Liposomal) with Vitamin C,  
Vitamin B12 & (6s)-5-Methyltetrahydrofolate  
(5-mthf) Glucosamine salt Tablet





The ultimate muscle building formula



# whey protein

BUILDS MORE  
MUSCLE THAN  
REGULAR WHEY



INCREASE  
STRENGTH  
PERFORMANCE



IMPROVE  
FAST  
RECOVERY



Whey is a top choice for those wishing to gain muscle because it may be absorbed more rapidly than other types of protein, and it contains all nine essential amino acids.

3g Creatine  
Monohydrate

7g  
BCAA

30g  
Protein

California  
Chocolate  
Flavour





# CREATINE MONOHYDRATE

*Micronized & Instantized*

## Helps to Increase Lean Muscle Mass

Creatine is a naturally occurring substance that turns into creatine phosphate when introduced into the body.

## Increase Muscle Volumization

In addition to creatine's role in ATP energy production, it may also improve the function of your muscle cells in other ways.

## Energy Support During Intense Workout

Creatine helps maintain a continuous energy supply to your muscles during intense lifting or exercise. Energy Support During Intense Workout



Helps to Increase Lean Muscle Mass\*



Energy Support During Intense Workout\*



Helps Enhance Athletic Performance\*





# HEALTH FORMULA

Ginseng Extract 4% | Astaxanthin 10% | Vitamin A (from 0.5miu/gm Vitamin A Acetate) | Vitamin C (Ascorbic Acid) | Vitamin E 50%(Tocopheryt Acetate) | Vitamin B1 (Thiamine Mononitrate) | Vitamin B2(Riboflavin) | Vitamin B3 (Nicotinamide) | Vitamin B6 (Pyridoxine HCL) | Folic Acid | Vitamin B12 | (Cyanocobalamine) | Biotin | Potassium Iodide Eq. to el. Iodine | Sodium Selenite Eq.to el. Selenium | Manganese Sulphate Monohydrate Eq.to el. Manganese | Copper Sulphate (Anhydrous) Eq.to el. Copper | Chromium Picolinate Eq.to el. Chromium | Dried Ferrous Sulphate eq.to el. Iron | Zinc Sulphate Monohydrate Eq.to el. Zinc | Flesperidine (80%)

Flaxseed (Omega 3 Fatty Acid source) | Ginseng Extract | Ferrous Fumarate | Magnesium Sulphate Eq.to El. Magnesium | Wheat Germ Oil | Choline Bitatrate | Citrus Biofiavonoids 10% | Dibasic Calcium Phosphorus Eq.to Calcium | Phosphorus | Niacinamide18 mg | Grape Seed Extract | Zinc Sulphate Eq.to El. Zinc | Natural Mixed Carotenoids | Green Tea Extract | Ginkgo Biloba Extract | Piperine 95% | Potassium Chloride Eq.to El. Potassium | Chloride | Manganese Sulphate | (Eq. to El. Manganese 0.54mg) | Vitamin B1 (Thiamine) | Folic Acid | Vitamin B6 | Cupric Sulphate | Lutein 6% | Potassium Iodine | Boron Proteonate Eq. to | El.Boron | Chromium Picolinate Eq.to El. Chromium | Sodium Selenite Pentahydrate Eq. to El. Selenium





L-Lysine Hydrochloride | Vitamin C | Nicotinamide | Zinc As Zinc Sulphate | Manganese As Manganese Sulphate | Vitamin B6  
Panthothenic Acid | Copper As Copper Sulphate | Vitamin B2 | Vitamin B1 | Lycopene 10% | Folic Acid | Iodine As Potassium  
Iodide | Slenium As Sodium Selenite | Vitamin B12 | Vitamin A Acetate(0.5 Miu/gm) | Vitamin D3 |Vitamin E Acetate 50%  
Lactobacillus Acidophilus

Grape Seed Extract 50% | Vitamin C (Ascorbic Acid) | Magnesium (as Magnesium Sulphate) | Niacinamide | Vitamin E 50%  
Zinc (as Zinc Sulphate) | L-Lysine Hydrochloride | Green Tea Extract | Calcium Pantothenate | Pyridoxine (as Pyridoxine HCl)  
Riboflavin | Vitamin B1 (as Thiamine Mononitrate) | Manganese (as Manganese Sulphate) | Copper (as Copper Sulphate)  
Folic Acid | Iodine (as Potassium Iodine) | Biotin | Chromium (as Chromium Picolinate) | Molybdenum (as Sodium  
Molybdate) | Cyanocobalamin | Vitamin A Acetate

Vitamin A (0.5 MIU/GM) | Vitamin E Acetate | Vitamin B1 | Vitamin B2 | Vitamin B6 | Cyanocobalamin | Niacinamide | Calcium  
D Pantothenate | Vitamin C | Folate (as Flic Acid) | Biotin | I-Glutamic Acid | L-Methionine | Magnesium Sulphate eq to el  
Magnesium | Manganese Sulphate eq to el Manganese | Copper Sulphate eq to el Copper | Zinc Sulphate eq to el Zinc  
Chromium Picolinate eq to el Chromium | Grape Seed Extract (95% Pronthocyanidin) | Lycopene 10% | DHA 10%

Pueraria Mirifica Extract | Pyridoxal 5 Phosphate | Folic Acid | Biotin | Vitamin B12 (Cyanocobalamine)

Calcium Pantothenate | Biotin | Green Tea Extract | N-Acetyl Cysteine | Copper Sulphate | Zinc Sulphate Monohydrate  
Potassium Iodide

Ascorbic Acid(Vitamin C) Coated | Niacinamide (Vitamin B3) | Calcium Pantothenate(Vitamin B5) | Riboflavine (Vitamin B2)  
Pyridoxine HCl (Vitamin B6) | Thiamine Mononitrate (Vitamin B1) | Beta-Carotene as Vitamin A Acetate (0.5 miu/gm) | Folic  
Acid (Vitamin B9) | Menaquinone (Vitamin K 2-7) | Biotin(Vitamin B7) | Cyanocobalamin (Vitamin B12) | Tocopherol Vitamin  
E Acetate(50%) | Docosahexaenoic Acid (10%) | Co Enzyme Q10 | Alpha Lipoic Acid | Grape Seed Extract(95% Pronthocyanaid-  
ins) | Ginseng Extract (4%)Powder | L-Glutamine Acid | Lycopene (10%) | Lutein (6%) | Dibasic Calcium Phosphate : As Eq. to  
el. Calcium | Magnesium as Magnesium Sulphate Eq. to el. Phosphorus | Zinc as Zinc Sulphate Monohydrate | Iron as Ferrous  
Fumarate | Manganese as Manganese Sulphate | Copper as Copper Sulphate | Iodine as potassium Iodide | Molybdenum as  
Sodium Molybdate | Chromium as Chromium Picolonate

Botanical Extract: Asparagus Racemosus (shatavri extract) | Saraca indica (Ashoka Extract) | Ocimum Sanctum (Tulsi  
Extract) | Curcuma Longa (Curcumin 95%) Other Nutrient: Inositol | L-Glutathione | Amino Acid: L-Lysine Hydrochloride  
Vitamins: Vitamin C | Vitamin B3 | Vitamin E 50% | Vitamin B5 | Vitamin B6 | Vitamin B2 | Vitamin B1 | Vitamin A | Folic Acid  
Biotin | Vitamin K | Vitamin D2 | Minerals: Calcium | Magnesium | Potassium | Chloride | Iron | Zinc| Manganese | Copper | Iodine  
Selenium Chromium





## FOR DIABETES

Cinnamon Extract | Gymnema | Vit C (Ascorbic Acid) | Vitamin D3 | Chromium Picolinate  
Alpha Lipoic Acid | Manganese Sulphate | Sodium Selenite | L Lysine | Lutein 10%

Berberine Hcl | Curcumin | Cinnamom | Gymnema | Chromium Picolinate | Momordica  
charantia

Cinnamon Extract 1200 mg | Gymnema 400 mg

Momordica charantia 1000 mg | Gymnema 200 mg | Cinnamom 300 mg





# EYE PROTECTION FORMULA

DHA 10% | Lutein 6% | Zeaxanthin 10% | Astaxanthin 10% | Vitamin B12

Lutein 10% | Zeaxanthin 10% | Omega 3 Fatty Acid | Zinc Sulphate | Astaxanthin 10%  
Vitamin A

Lutein (containing Zeaxanthin 250 mcg) | Astaxanthin | L-Glutathione

Vitamin C | Bilberry Extract 7% | Grape Seed Extract 50% | L-Glutathione | Zinc  
Vitamin E 50% | Astaxanthin 10% | Lutein 10% | Zeaxanthin 10% | Copper





# FEMALE FERTILITY

Ferrous Gluconate As Iron | Astaxanthin 10% | Zinc | L-Arginine | Vitamin B6 | Lycopene 10% | Folate (as Folic Acid) | L-Selenomethionine  
Vitamin B12

Botanical Extracts: Shatavari (asparagus Racemosus) | Ashoka (Sarac Indica) | Tulsi (Ocimum Sanctum) | Turmeric (Curcuma Longa) | Other Nutrient: Inositol | L-Glutathione | Amino Acid | L-Lysine Hydrochloride | Vitamins & Minerals | Vitamin C | Vitamin B3 | Vitamin E 50% | Vitamin B5 | Vitamin B6 | Vitamin B2| Vitamin B1 | Vitamin A ( As 20% Beta Carotene) | Folic Acid | Biotin  
Vitamin K | Vitamin D2 | Minerals: Calcium as Calcium Carbonate | Magnesium as Magnesium Sulphate | Potassium as Potassium Sulphate | Chloride as Potassium Chloride | Iron as Ferrous Fumarate | Zinc As Zinc Sulphate | Manganese as Manganese Sulphate  
Copper as Copper Sulphate | Iodine as Potassium Iodide | Selenium as Sodium Selenate |Chromium as Chromium Picolinte

L-Arginine | N-Acetyl-L-Cysteine | Coral Calcium (eq To El Calcium 50 mg) | Grape Seed Extract 50% | Vitamin C | Lactic Acid Bacillus

Myo-Inositol | Astaxanthin 10% | Zinc Oxide as Eq. To Elemental Zinc | L-Arginine | Pyridoxine HCL | Lycopene 6% | Folic Acid L-Selenomethionine | Vitamin B12 | Ferrous Gluconate as Eq. To Elemental Iron

Myo-Inositol | D-Chiro-Inositol | Chromium Picolinate Eq. To El. Chromium | Vitamin D3

Myo-Inositol | Melatonin | Folate (as Folic Acid) | Vitamin D3





# HAIR PROTECTION FORMULA

Plant Based Collagen Peptide | Lignans from Flaxseed | Borage Extract (20%) | Soya Isoflavones | Grape Seed Extract 50% | Green Tea Extract 50% | Choline Bi Tartrate | Myo-Inositol | Amino Acids:- | N-Acetyl-L-Cysteine | L-Methionine | L-Leucine | L-Arginine | L-Lysine Hcl | L-Phenylalanine | L-Isoleucine | L-Valine | L-Glycine | L-Threonine | L-Histidine | L-Tryptophan | Vitamins: Vitamin C | Niacinamide (Vitamin B3) | Calcium Pantothenate (Vitamin B5) | Vitamin B6 | Biotin | Vitamin D | Minerals: Ferrous Fumarate eq to el Iron | Zinc Methionine eq to zinc | Copper | Folic Acid | Selenium

Plant based Collagen Peptide | B-Sitosterol | Grape Seed Extract 50% | Green Tea Extract 50% | Choline Bi Tartrate | Myo-Inositol | Amino Acids: N-Acetyl-L-Cysteine | L-Methionine 40 mg | L-Leucine | L-Arginine | L-Lysine Hcl | L-Phenylalanine | L-Isoleucine | L-Valine | L-Glycine | L-Threonine | L-Histidine | L-Tryptophan | Vitamins: Vitamin C | Niacinamide (Vitamin B3) | Calcium Pantothenate (Vitamin B5) | Vitamin B6 | Biotin | Vitamin D | Minerals: Ferrous Fumarate Eq. to el. Iron | Zinc Methionine Eq. to el. Zinc | Copper | Folic Acid | Selenium

Essential Vitamins: Calcium Pantothenate (Vitamin B5) | Ascorbic Acid (Vitamin C) | Niacinamide (Vitamin B3) | Biotin (Vitamin B7) | Inositol (Vitamin B8) | Riboflavin (Vitamin B2) | Pyridoxin HCL (Vitamin B6) | Thiamine Mononitrate (Vitamin B1) | Betacarotene (Vitamin A Acetate 0.5 mg/gm) | Folic Acid (Vitamin B9) | Cyanocobalamin (Vitamin B12) | Tocopherol (Vitamin E Acetate 50%) | Essential Nutrients & Minerals: Dibasic Calcium | Phosphate: As Eq to el. Calcium | Eq to el. Phosphorus | Magnesium Sulphate | Ferrous Fumarate (Iron) | Zinc as Zinc Sulphate Monohydrate | Manganese sulphate | Copper Sulphate | Amino Acid | L-Glutamic Acid | L-Cysteine | DL-Methionine | L-Leucine | L-Arginine | L-Lysine hydrochloride | L-Proline | L-Serine | L-Isoleucine | L-Valine | L-Glycine | L-Tyrosine | L-Threonine | L-Glutamine | GLA (Gamma Linolenic Acid) | N-Acetyl Cysteine | L-Tryptophan | Grape Seed Extract (95% Polyphenol)

Protein Hydrolysate 330 mg providing essential Amino Acids: L-Glutamic Acid | DL-Methionine | L-Aspartic Acid | L-Leucine | L-Arginine | L-Lysine | L-Proline | L-Serine | L-Phenylalanine | L-Isoleucine | L-Valine | L-Glycine | L-Tyrosine | L-Alanine | L-Threonine | L-Histidine | L-Cysteine | L-Tryptophan | Vitamins: Vitamin C | Vitamin B5 | Vitamin E 50% | Vitamin B3 | Folic Acid | Biotin | Minerals: Calcium | Magnesium | Iron | Zinc | Manganese | Copper | Selenium | Botanical Extracts | Soya Isoflavones 40% | Grape Seed Extract 50%

Millet Seed Extract | Green Tea Extract 50% | Brewery yeast | L-Cysteine | Soya isoflavones | DL-Methionine | Grape Seed Extract 50% | Choline | Melatonin | Vitamin B3 | Vitamin B5 | Folic Acid | Biotin | Zinc | Iron | Manganese | Copper





# LIVER PROTECTION FORMULA

Silymarin 35% | Vitamin C | Zinc Sulphate Monohydrate | Calcium Panthothenate | Ferrous Fumarate | Vitamin B6 | Vitamin B2 | Vitamin B1 | L-ornithine Laspartate | N-acetyl L-cysteine | L-carnitine | Myo-inositol | L-Glutathione | Choline Bi Tartrate | Q10 Co Enzyme | Folic Acid | Sodium Selenite | Vitamin B12 | Vitamin D | Vitamin E

Silymarin 80% C | L-orninithine L-aspartate | Folate (as Folic Acid) | Vitamin B6

Silymarin 80% | Lecithin | L-orninithine L-aspartate | Folic Acid | Vitamin B6 | Vitamin B12

Silymarin 45% | L-Ornithine L-Aspartate | N-Acetyl L -Cysteine | L-Carnitine L-Tartrate | Inositol | Vitamin C | L-Glutathione | Choline Bi Tartrate | Zinc | Vitamin B5 | Co-Enzyme Q10 | Iron | Vitamin B6 | Vitamin B2 | Vitamin B1 | Folic Acid | Selenium | Vitamin B12 | Vitamin D | Vitamin E Acetate (50%)

Silymarin 80% | Lecithin | L-ornithine L-tartrate | Niacinamide | Pantothenic Acid | Vitamin B1 | Vitamin B2 | Vitamin B6 | Vitamin B12 (Cyanocobalamin)





# MALE FERTILITY

L-Carnitine L-tartrate | L-Arginine | Co-Enzyme Q 10 | L-Citrulline | Tribulus Terrestris | Omega 3 Fatty Acid | Ginseng Extract 4% | Asparagus Racemosus Ext. | Grape Seed Extract 50% | Vitamin C | Mucuna Pruriens Extract | Ginko Biloba 20% | Vitamin E (50%) | Zinc | Astaxanathin 10% | Vitamin A | Vitamin D

Tribulus Terrestris | Co-Enzyme Q10 | L-Arginine | Lycopene 10% | Selenium

L-Carnitine L-Tartrate | Co-Cnzyme Q10 | Astaxanthin 10% | Zinc | Lycopene 10%

L-Carnitine L-Tartrate | Co-Cnzyme Q10 | Astaxanthin 10% | Zinc | Lycopene 10%

Fenugreek Extract | L-Citrulline | L-Arginine | Tribulus Terrestris | Grape Seed Extract 50% | Bioperine

L-Arginine | Co-Enzyme Q10 | L-Carnitine L-Tartrate | L-Glutathione | L-Citrulline | Tribulus Terrestris | Astaxanthin 10%

Tribulus Terrestris | Ginseng Extract 4% | L-Arginine | L-Citrulline | Mucuna Pruriens | Safed Musli Chlorophytum Borivillianum | Vitamin C | Ginkgo Biloba Extract 24% | Zinc | Selenium

Tribulus Terrestris | Co-Enzyme Q10 | L-Arginine | Lycopene 10% | Selenium

Fenugreek Extract | L-Citrulline | L-Arginine | Tribulus Terrestris | Grape Seed Extract 50% | Bioperine

Fenugreek Extract | L-Citrulline | L-Arginine | Tribulus Terrestris Extract | Grape Seed Extract 50% | Lecithin | Caffeine  
Ginseng Extract 4% | Vitamin B3 | Zinc | Piperine | Copper





# NERVOUS SYSTEM

Vitamin D | Vitamin B6 | Folate (as Folic Acid) | Vitamin B12 | Alpha Lipoic Acid | Acetyl L-Carnitine  
Curcumin | Broccoli powder (Aerial Part) | Ashwagandha Extract

Omega 3 Fatty Acids | Coenzyme Q10 | Folate (as Folic Acid) | Cyanocobalamin | Pyridoxal 5 Phosphate  
DI-Alpha Tocopherol Acetate

L-Acetyl Carnitine | Alpha Lipoic Acid | Omega 3 Fatty Acid

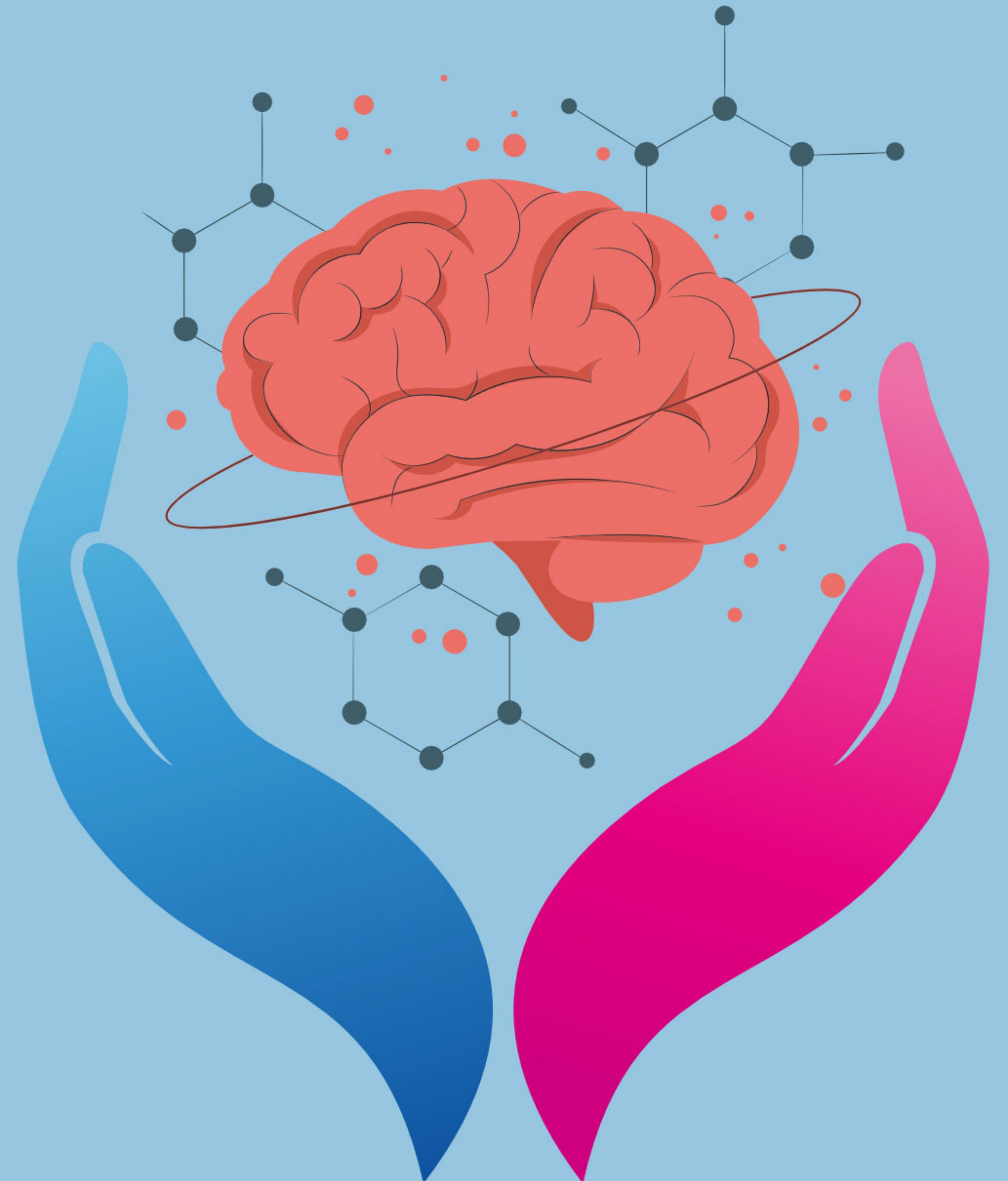
L-Acetyl Carnitine | Calcium (as Calcium Carbonate) | Alpha Lipoic Acid

L-Carnitine L-Tartrate | Alpha Lipoic Acid 250 | Co-Enzyme Q10

Alpha Lipoic Acid | Omega 3 Fatty Acid | Vitamin B6 | Folate (as Folic Acid)

L-Carnitine L-Tartrate 250 mg | Alpha Lipoic Acid 250 mg | Vitamin B6 1.5 mg | Vitamin D3 500 IU | Folate  
(as Folic Acid) 300 mcg

L-Acetyl Carnitine 400 mg | Alpha Lipoic Acid 200 mg | Vitamin B6 1.5 mg | Folate (as Folic Acid) 300 mcg





Glucosamins Sulphate | Chondroitin Sulfate | Collagen Peptide | Curcumin | L-Proline | L-Lysine Monohydrochloride  
L-Glutamine | Vitamin C | Quercetin | Iron | Zinc (eq. To El.Zinc 3.64 Mg) | Bambusa Vulgaris | Vitamin B3 | Vitamin B6  
Manganese | Vitamin B12

Chondroitin Sulphate Sodium | Collagen Peptide Type-I | Vitamin C | Sodium Hyaluronate

Chondroitin Sulfate Sodium | Bioactive Collagen | Peptide Type-1 | Vitamin C | Sodium Hyaluronate

L-Arginine | Mucopolysaccharides | Chondroitin Sulfate | Collagen Peptide Type-1 | Vitamin C | Sodium Hyaluronate

Nano Curcumin (Curcuma Longa 20%) | Chondroitin Sulfate | Protein Hydrolysate 20% | Collagen Peptide Type-i  
Magnesium | Sodium Hyaluronate | Vitamin C | Zinc | Piperine | Manganese | Vitamin B6 | Vitamin B12 | Vitamin D3

Boswellia Serrata Extract | Sodium Hyaluronate | Native (undenatured) | Collagen Peptide Type II

Boswellia Serrata Extract | Sodium Hyaluronate | Native (undenatured) | Collagen Peptide Type II

Rosehip Extract | Devil's Claw Extract | Chondroitin Sulphate | Collagen Peptide Type II | Boswellia Serrata Extract 65%  
Vitamin D3 | Curcumin | Vitamin C

Boswellia Serrata Extract | Sodium Hyaluronate | Native (undenatured) | Collagen Peptide Type II

Calcium Carbonate (eq. To El. Calcium 500 Mg) | Vitamin D3 | Vitamin E Acetate 50% | L-Carnitine L-Tartrate



**ORTHO FORMULA**



Collagen Peptide | Copper Sulphate eq.to El. Copper | Ferrous Sulphate eq. To El. Iron | Manganese Sulphate eq.to El. Manganese | Sodium Selenate eq.to El. Selenium | Zinc Sulphate eq.to El. Zinc | Folic Acid | Ginger Extract | Glucosamine Sulphate | Rosehip Extract 5% | Vitamin B12 | Vitamin C | Vitamin D3

Glucosamine Sulphate Potassium | Chloride | Rosehip Extract (5% Polyphenol) | Collagen Peptide Type – II | Chondroitin Sulphate | (From 118 mg Chondroitin Sulphate Sodium) | Ginger Extract | Essential Vitamins: Vitamin C | Vitamin E 50% Folic Acid | Vitamin B12 | Vitamin D3 | Essential Minerals: Iron | Zinc | Selenium | Manganese | Copper

Undenatured Collagen Peptide-II

Glucosamine Sulphate | Rosehip Extract | Sodium Hyaluronate

Chondroitin Sulfate Sodium | Curcumin Extract 95% | Methylsulfonylmethane

Collagen Type-II Matrix | Containing Minimum: Hydrolyzed Collagen Type-II | Chondroitin Sulfate | Hyaluronic Acid | Rosehip Extract | Undenatured Collagen Type-II | Vitamin C

Boswellia Serrata Extract 50% 100 Mg | Curcumin | Mucopolysaccharides | Undenatured Collagen | Hyaluronic Acid

Glucosamine Sulphate | Omega-3 Fatty Acid (9:6) | Vitamin C | Chondroitin Sulphate | Zinc | Manganese | Vitamin D3

Glucosamine Sulphate | Boswellic Acid | Methyl Sulfonyl Methane | Chondroitin Sulphate | Curcumin | Hyaluronic Acid | Magnesium Sulphate | Zinc Sulphate eq. To El. Zinc | Vitamin K27 | Vitamin D3

Cissus Quadrangularis | EXT. 2.5 % | Milk Calcium | Withania Somnifera Extract | Vitamin D3

Cissus Quadrangularis Extract | Coral Calcium | Vitamin D3

Cissus Quadrangularis Ext. 2.5% | Withanina Somnifera Ext. | Emblica Officinalis Extract | Commiphora Wight II Extract

Mucopolysaccharides | Collagen Peptide Type I | Vitamin C





# PLATELETS INCREASING FORMULA

Carica Papaya Leaf Extract | Tinospora Cordifolia Extract | Goat Milk Powder | Wheat Germ Extract | Promengranate Extract | Vitamin E 50%

Carica Papaya Leaf Extract | Tinospora Cordifolia Extract | Wheat Germ Extract | Promengranate Extract | Vitamin E 50%

Carica Papaya Leaf Ext(10.1) | Tinospora Cardifolia Ext (10.1)

Carica Papaya Leaf Extract | Tinospora Cordifolia Extract | Goat Milk Powder | Vitamin E 50%

Carica Papaya Leaf Ext(10.1)

Carica Papaya Leaf Extract | Tinospora Cordifolia Extract | Swertia Chirata Extract | Goat Milk Powder | Vitamin E 50%

Carica Papaya Leaf Extract | Tinospora Cordifolia Extract | Swertia Chirata Extract



# SKIN PROTECTION FORMULA

Lutein 10% | Astaxanthin 10% | Zeaxanthin 10% | Lycopene 10%

Vitamin C | Vitamin E 50% | Zinc as Zinc Sulphate | Alpha Lipoic Acid | Vitamin B3 | Vitamin B6 | Co-Enzyme Q10  
Biotin | Lycopene 6% | Folic Acid | Sodium as sodium selenate | Vitamin A

Lutein 10% | Astaxanthin 10% | Zeaxanthin 10% | Lycopene 10%

L- Glutathione | Alpha lipoic Acid | Vitamin C | Grape SeedExtract | L- Arginine

L-Glutathione | Alpha Lipoic Acid | Vitamin E 50% | Ascorbic Acid | Grape Seed Ext. 50% | Green Tea Ext. 50%  
Astaxanthin 10%

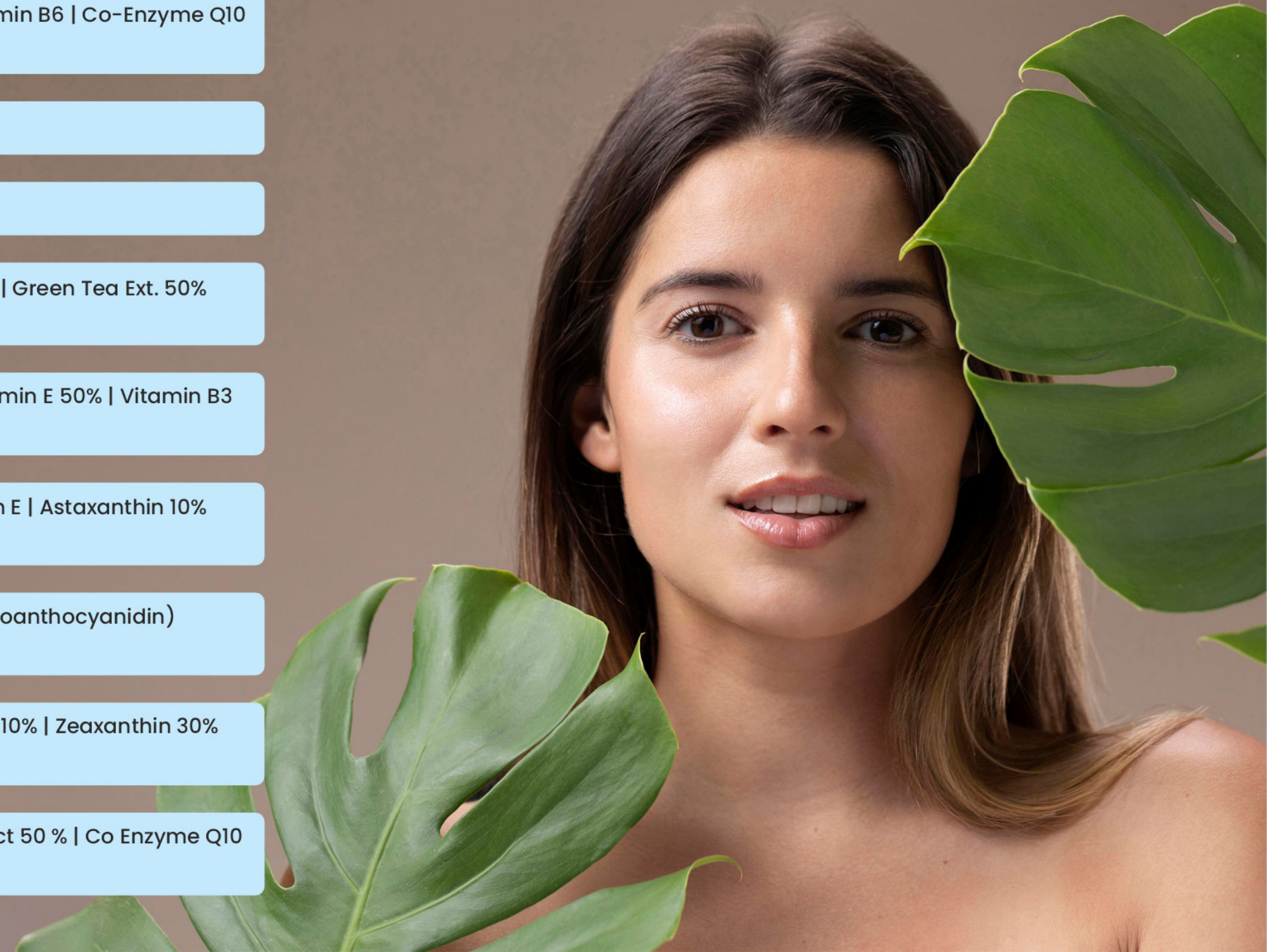
Vitamin C | Grape Seed Extract 50% | Rosehip Extract 5% | Alpha Lipoic Acid | Zinc | Vitamin E 50% | Vitamin B3  
Lycopene 10% | Co-Enzyme Q10 | Biotin | Vitamin B6 | Folic Acid | Selenium | Vitamin A

Vitamin C | Bilberry Extract | Grape seed Extract (50% Proanthocyanidin) | Zinc | Vitamin E | Astaxanthin 10%  
Lutein 10% | Copper | Zeaxanthin 10% | L-Glutathione

L-Glutathione | Alpha Lipoic Acid | Vitamin C (Coated) | Grape Seed Extract (As 95% Proanthocyanidin)  
L-Arginine | Pycnogenol

Lutein 10% | Zinc | Vitamin C | L-Glutathione | Manganese | Astaxanthin 10% | Lycopene 10% | Zeaxanthin 30%  
Copper | Selenium | Vitamin A

L-Glutathione reduced | Alpha Lipolc Acid | Pycnogenol | Vitamin C | Grape Seed Extract 50 % | Co Enzyme Q10  
PACK-2: Natural Vitamin C | (Derived from Extract of Phyllanthus Emblica)





# WEIGHT REDUCE FORMULA

Garcinia Cambogia Extract | Green Tea Extract 50% | Raspberry Extract | Grape Seed Extract 50% | Green Coffee.bean Extract | Fucoxanthin  
Chromiun (eq To El. Chromiun 12.43 mcg)

Garcinia Cambogia Extract | Green Tea Extract (50% Polyphenol)

50% Chlorogenic Acid | Garcinia Cambogia (naturallyExtracted With 60% HCA) | Hydroxycitric Acid | Green Tea Extract  
(epigallocatechil Gallate )

Garcinia Cambogia Extract | Green Tea Extract (50% Polyphenol)





